



200 years

Evolving Processes, Configurations, and Support for Success

Melissa Chiotis

MANAGER, CONEDISON

Agenda

- ✓ Introduction
- ✓ Con Edison Overview
- ✓ Central Engineering Data Migration
- ✓ Gas & Electric Engineering Data Migration
- ✓ Adept at Con Edison
- ✓ New Adept Projects
- ✓ Key Takeaways
- ✓ Questions



Melissa Chiotis

MANAGER, CON EDISON

Manager at Con Edison

- ✓ BSE Chemical Engineering from UPenn
- ✓ MSE Electrical Engineering & MBA from ASU

Worked at Coned for more than 20 years

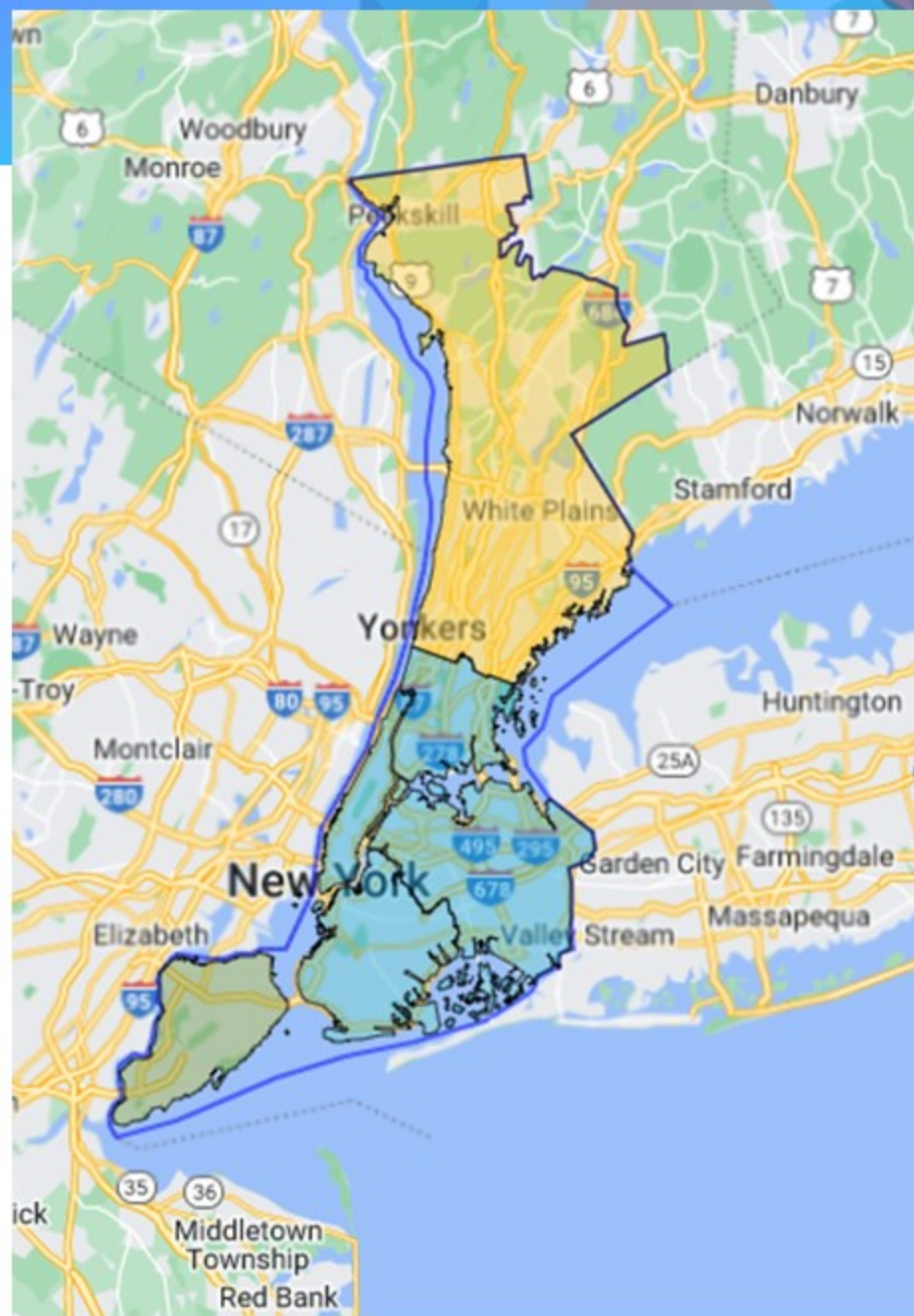
- ✓ Project Manager for Gas and Electric Operations Adept projects
- ✓ Technical Support for Gas and Electric Operations Adept users
- ✓ Assist with additional projects

Part time employee, full time mom

- ✓ Homeschool 3 children (4, 6, & 9)

Con Edison Overview

- ✓ Electric, Gas and Steam utility for New York metro area
- ✓ 6 organizations support 10 million New Yorkers
- ✓ Approximately 14k employees



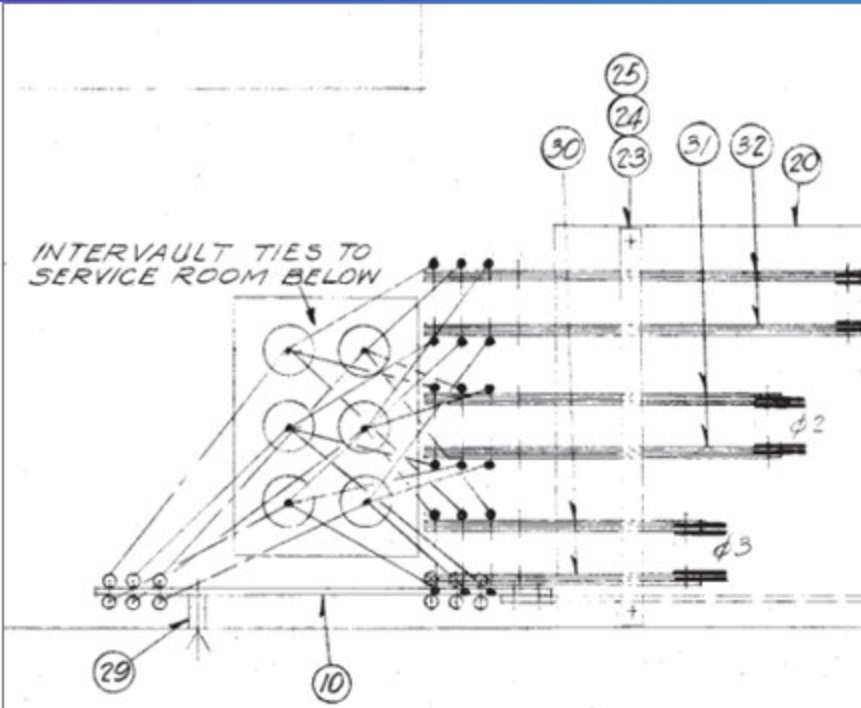
Central Engineering Data Migration

Central Engineering migrated from Team Center to Adept in 2017

- ✓ Functionality
- ✓ Performance
- ✓ Cost savings

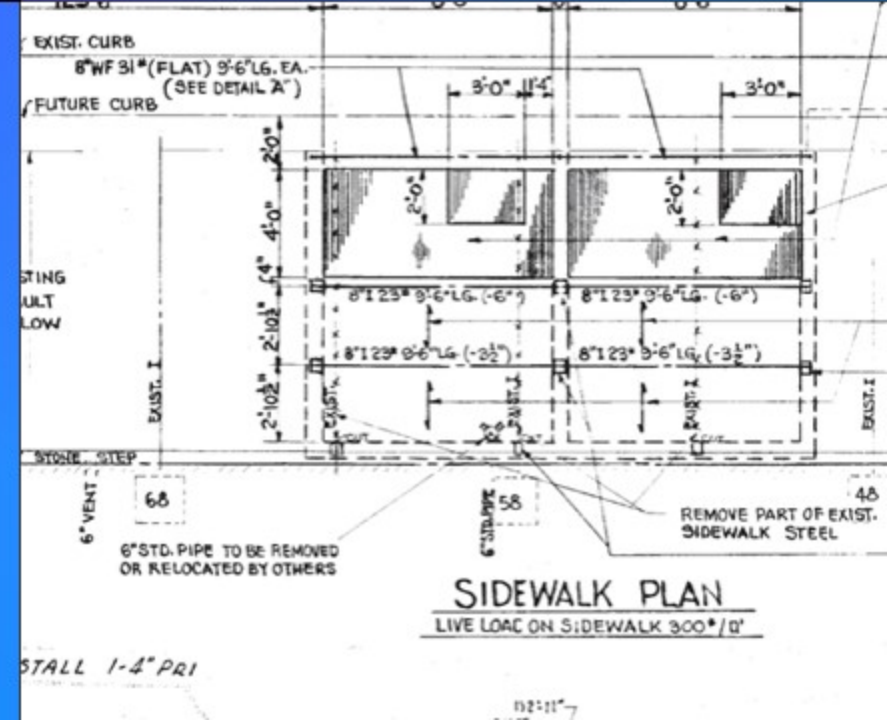


Biggest challenges included aggressive schedule and data migration timing



Transferred over 2 million drawings, schedules, and material lists

- ✓ Gas Transmission
- ✓ Electric Transmission
- ✓ Electric Distribution

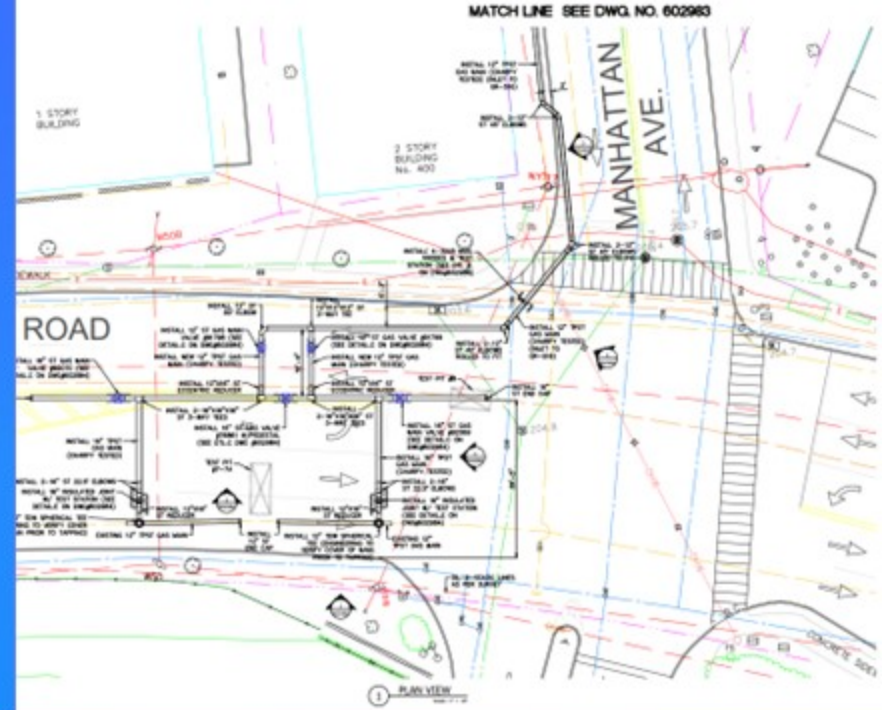




Gas & Electric Data Migration

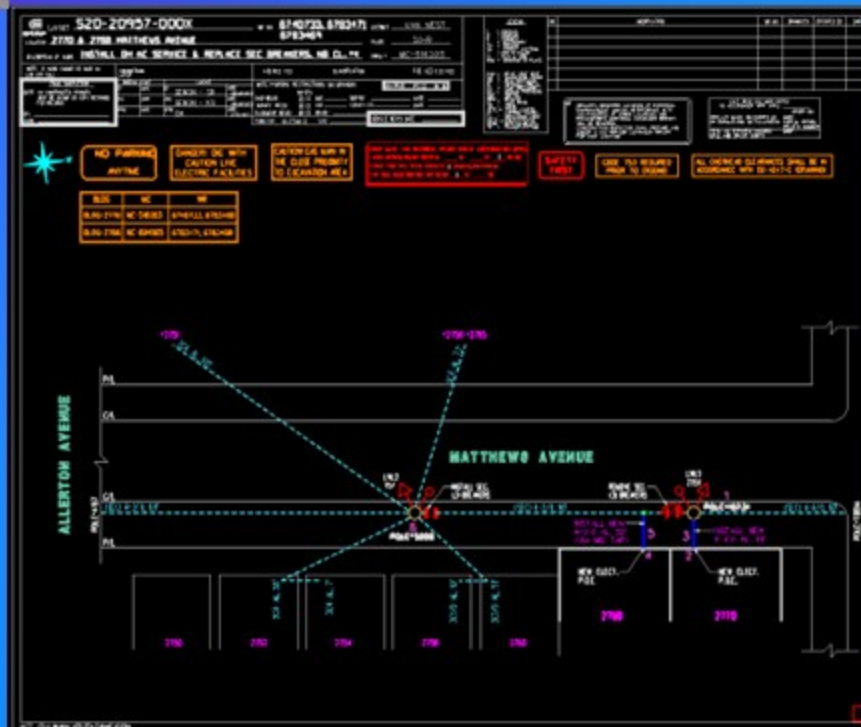
Gas and Electric Operations migrated from ProjectWise to Adept in 2021

- ✓ Improved functionality
- ✓ Cost Savings



Transferred 1.5 million drawings and supporting documents

- ✓ Gas Transmission
- ✓ Gas Distribution
- ✓ Electric Distribution



Biggest challenges involved workflow processes, custom integrations, and training

Gas and Electric Data Migration

Migrating into a Workflow

1

Capture how
migration
should work

2

Identify possible
migration errors

3

Create rules to
map workflows
and flag errors

Gas and Electric Data Migration

Adapting Custom MicroStation to Adept

Business Requirement: Files saved in Adept can be modified in our custom MicroStation



Solution: Work Area for each user was created on MicroStation server share folder

Gas and Electric Data Migration

Adapting Custom MicroStation to Adept

Mapping and Layout Design Applications Portal

conEdison

Welcome: chiotism

Launching Mapping & Layout Applications

PRODUCTION Applications TEST Applications

BQ View CC	Bronx Manhole Detail	Manh Easy Map View	Manh Smart Layout	MicroStation 7.1.5.3
WX Advance	WX Constr Mgmt Job Planning	WX EasyMap	WX View	WX View CC
Westchester Manhole Detail	XW ES Smart Layout	XW Smart Layout		

Contact Mapping Support © 2002, Con Edison

Home Search Document Edit View Tools Collaborate Work

Search Card Data Card View Document Check In Check Out Favorites FileGuide Inbox Library Browser Results Work Area

Home Windows

Paths Filter: View All

Adept Work Area - PROD

BW Customer Eng Smart Layout Work Area

Filename	Status	Lib
E22-13160-003X.lo	Duplicate	
S22-20048-000B.lo	Duplicate	

Document Dashboard

E22-13160-003X.I	Elapsed Time	Workflow	Workflow Step

Where Used Children Versions WIP Versions Workflow Audit

Favorites FileGuide Inbox Library Browser

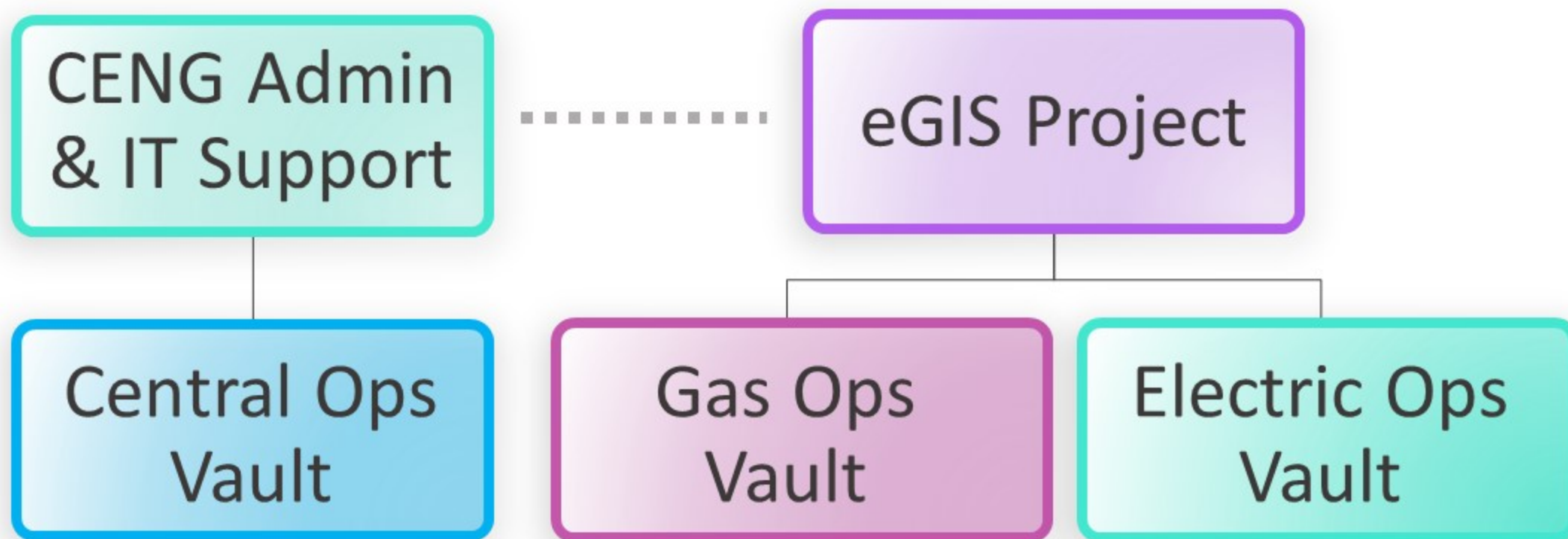
Information Source: WIP Current Work Area: BW C... Active Library Set: <all> All System Tabs Show

ADEPT AT CON EDISON

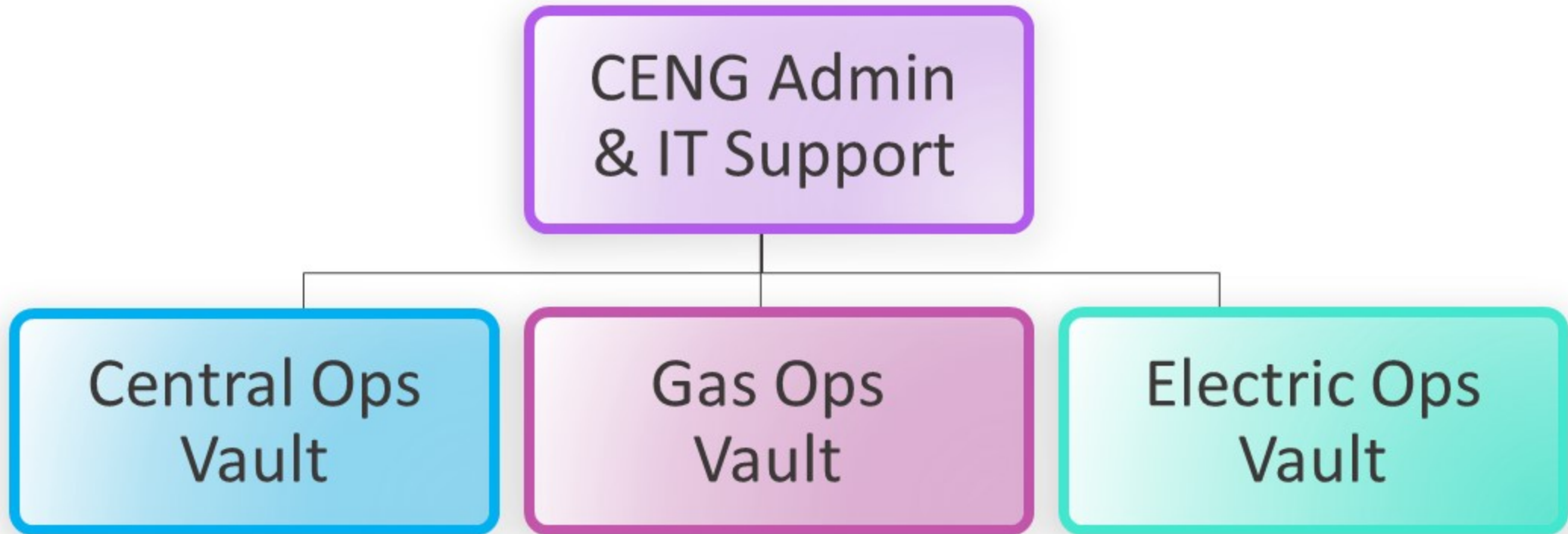
User Groups



Support Structure



Potential Support Structure



New Adept Projects

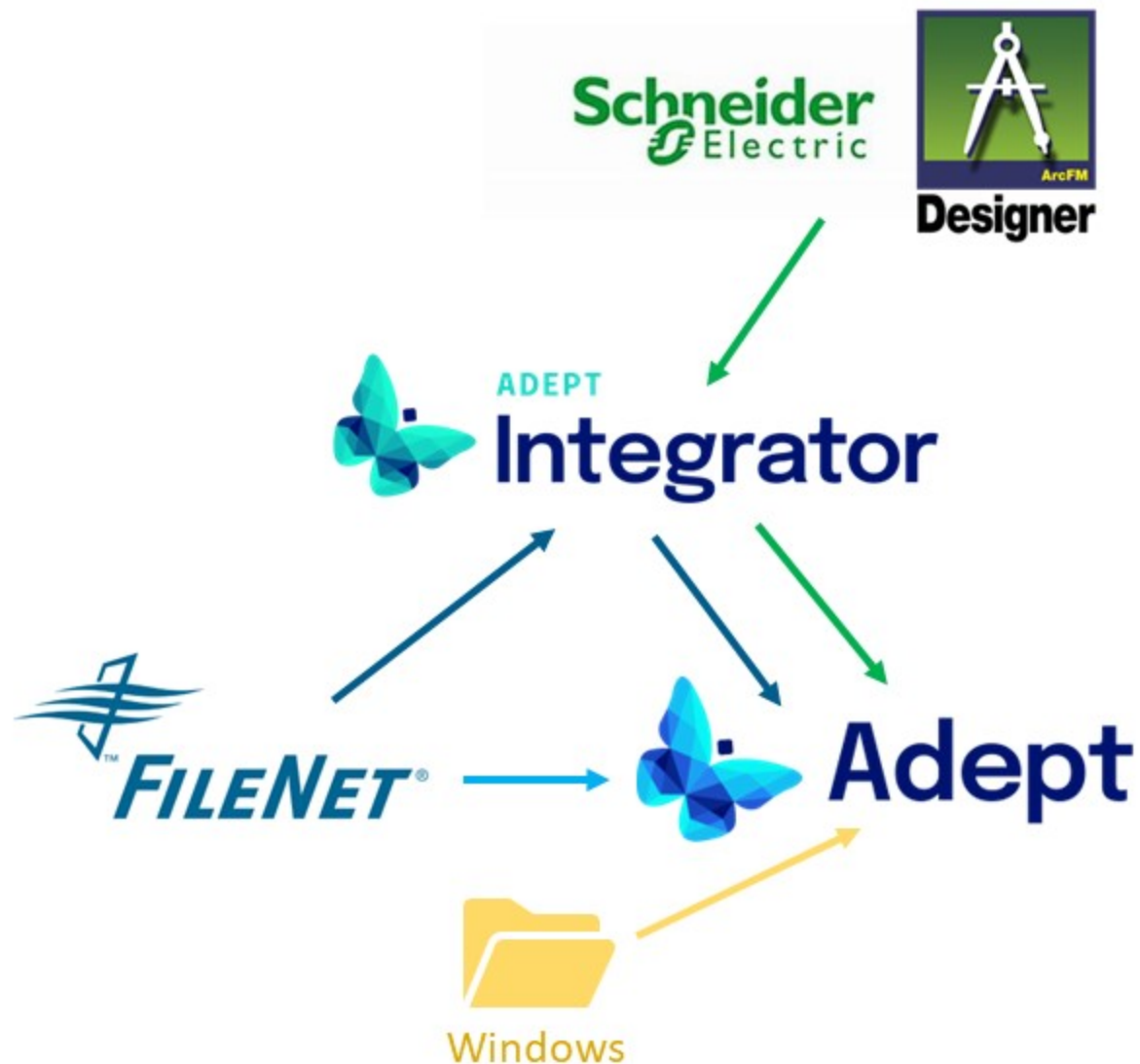
Integrations

- ✓ Designer XI Integration
- ✓ Construction Management Integration

Data Migration

- ✓ Staten Island Electric Engineering
- ✓ Electric Emergency Layouts
- ✓ Gas Transmission Archives

Adept Upgrade



Key Takeaways

Deep Understanding of Business Needs Ensures Success

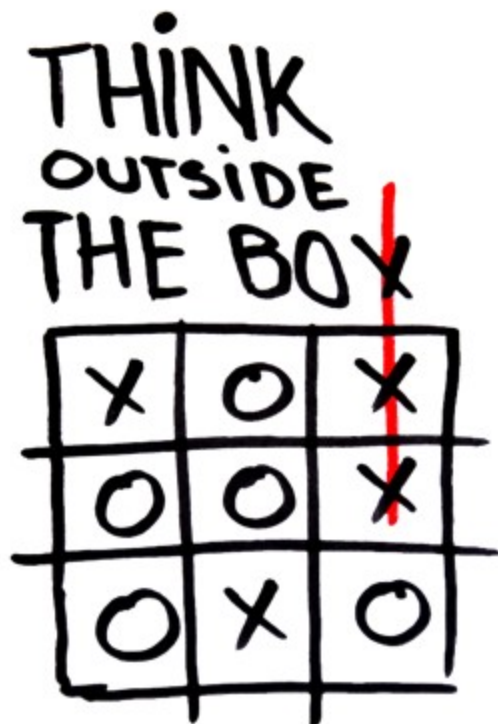
- ✓ Conduct workshops with business users before Synergis Implementation Planning and Design (IPD)
 - ✓ Existing processes
 - ✓ Existing workflows
 - ✓ Pain points
- ✓ Ask questions
 - ✓ What documents are used for
 - ✓ Who uses them
 - ✓ How are they used



Key Takeaways

Think Out of the Box to Create Solutions

- ✓ Push back if people tell you it can't be done
- ✓ Understand the flexibility of business requirements
- ✓ Keep asking questions
- ✓ Utilize experience from previous work



Key Takeaways

Don't Underestimate the Importance of Training

- ✓ Training takes a lot of time to develop
- ✓ Think of all common scenarios
- ✓ Create a mechanism to ensure users take the training



Key Takeaways

Put Yourself in User's Place for +1 Customer Experience

- ✓ Understand where the user is coming from
 - ✓ How do they use your product?
 - ✓ What makes their life easier?
- ✓ If you were the user what would make your experience better?



Key Takeaways

- ✓ Deep Understanding of Business Needs Ensures Success
- ✓ Think Out of the Box to Create Solutions
- ✓ Don't Underestimate the Importance of Training
- ✓ Put Yourself in User's Place for +1 Customer Experience

Thank You!



Con Edison



@ConEdison



@conedison