



---

## What's New in Adept 2011

---

Synergis Software  
200 Kelly Road, Quakertown, PA 18951  
+1 215.529.9900, 800.836.5440  
[www.SynergisSoftware.com](http://www.SynergisSoftware.com)

## What's New in Adept 2011

Adept 2011 introduces exceptional new features that enhance communication and collaboration across the enterprise, improve performance and scalability, and enrich the Adept user experience. Adept 2011 delivers Vault Replication with binary differencing, an enhanced web client with a fresh interface, new and improved capabilities for creating and managing transmittals, integration with Microsoft SharePoint, scalability and performance improvements, expanded Library Card and Memo Field options, and simplified configuration of third party viewers. These features, plus CAD integration support for AutoCAD, Autodesk Inventor, AutoCAD Electrical and Mechanical, and SolidWorks will help you realize more value from Adept.

### **Adept Viewer Update for Adept Desktop and Adept Explorer**

Adept 2011 now includes the latest version of AutoVue v. 20.0.2 for Adept Desktop and AutoVue 20.1.1 for Adept Explorer. These new releases of the Adept Viewer introduce timely support for new formats and include fidelity improvements for existing formats, as well as several enhancements for viewing PDF files. The following new formats are among the many enhancements that have been added with this release:

- SolidWorks 2012
- Inventor 2012
- AutoCAD 2012
- AutoCAD Mechanical 2012
- Adobe Acrobat 10

For a complete list of all the new formats supported by Adept 2011, please visit our web site's Resource Center and review the "Adept 2011 Viewer Supported Formats" document.

### **Adept Vault Replication**

Adept Vault Replication allows multiple geographic locations to share a common Adept Vault, providing users at any location with fast, local access to files, and ensuring they are always working on the latest version. Replication can be scheduled to occur at any desired time interval, and occurs automatically to ensure users always access the latest version. Adept users have a single, unified view of files, even in globally distributed, multi-vault environments.

#### ***Adept Vault Replication with Binary Differencing***

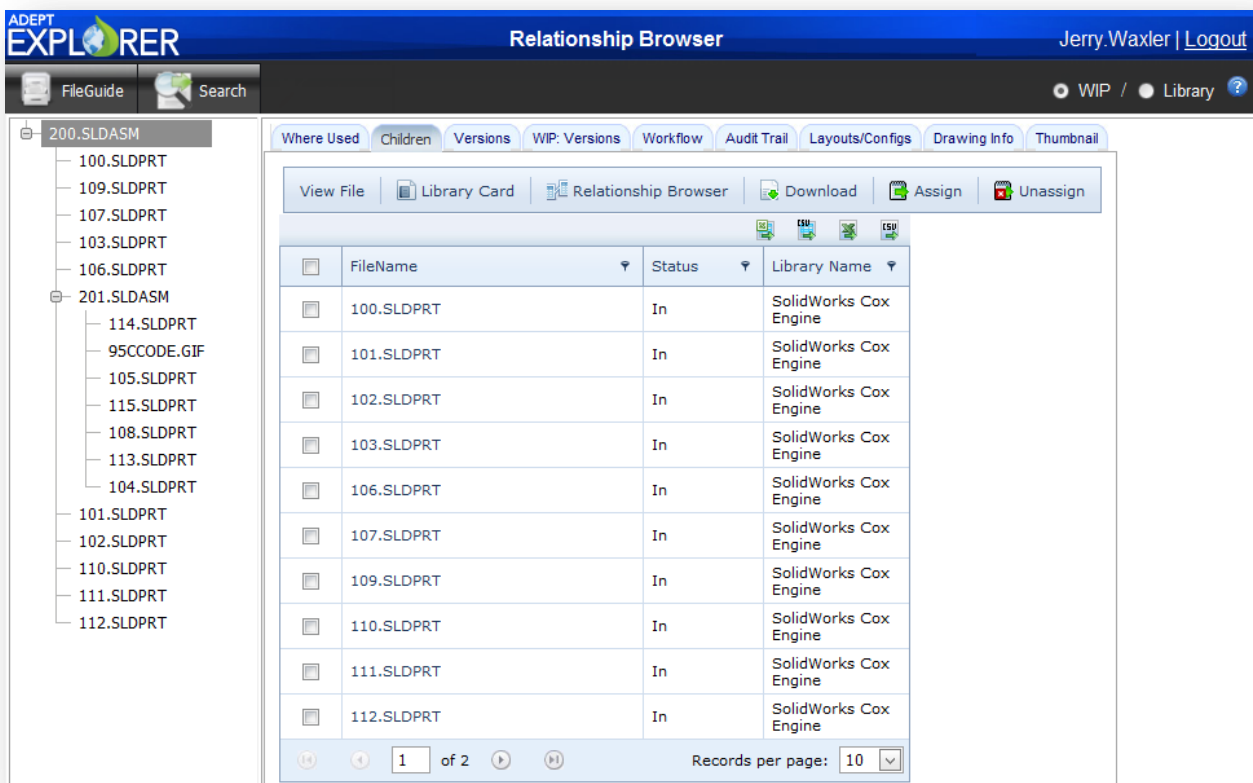
Vault Replication with Binary Differencing is a premium option for vault replication. When an Administrator enables binary differencing, only the changes between files – not the entire file – are replicated to other sites. Binary differencing makes replication transfers much faster, while using significantly less network bandwidth. Its performance improvements will especially benefit organizations replicating vaults that contain 2D drawings or 3D models and collaborating online across sites.

## Adept Explorer User Interface

Adept Explorer's user interface has been upgraded with a sleek, new look and feel, along with improved controls and graphical components. Changes include:

- easy-to-access right mouse click menus
- drag and drop columns
- easy custom column set management
- support for rich text and images in the Library card

Adept Explorer also has faster screen refreshes and can now launch 3<sup>rd</sup> party viewers based on file type. Emails generated by the Adept Server based on workflow events now include a URL link to the Adept Explorer Inbox. With this new capability, users who do not have the Adept Desktop product installed can still have access to files that are referenced in email notifications.



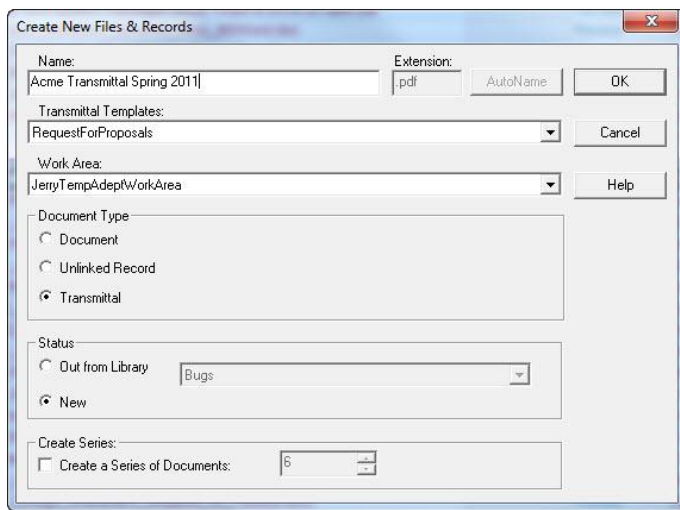
*The Adept Explorer user interface has been updated with a new look and improved controls.*

## Adept Reviewer

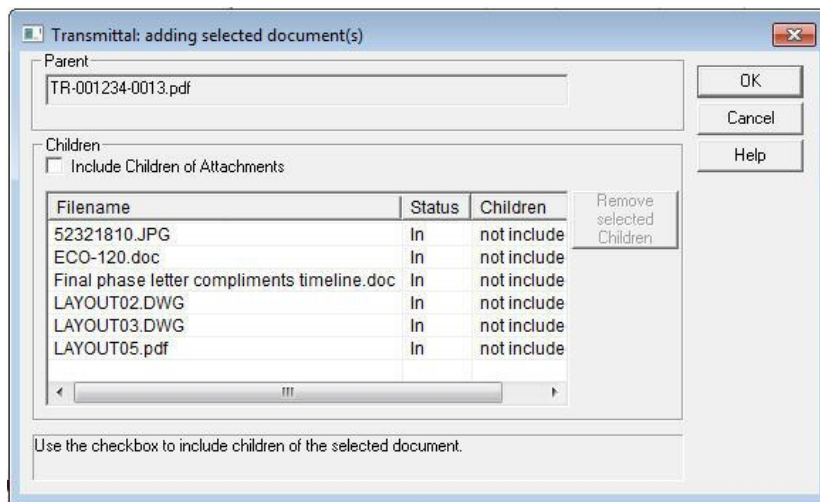
Built on the Adept Explorer 2011 platform, Adept Reviewer adds full workflow participation to the Adept web client experience. With Adept Reviewer users can approve, reject, reject to previous step, reject to originator, re-route to a new workflow, and expedite approve and reject, add comments, and more. Email notification and time-based alerts are supported. Adept Reviewer also allows users to edit metadata in an Adept Library Card, including the new rich



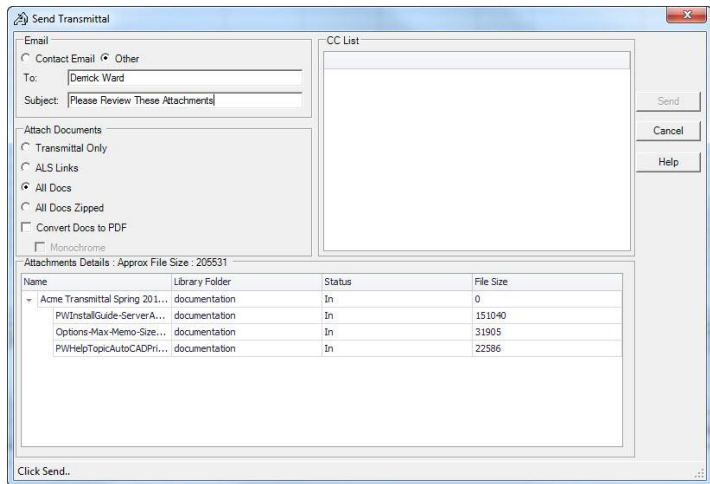
- The Send Transmittal command lets you deliver an approved or signed in transmittal to one or many recipients.
- Adept tracks all transmittal actions in an audit trail
- The custom fields for Transmittal properties can be configured more easily
- When you attach a file to a transmittal cover sheet, Adept creates a special relationship type that is different from other inter-relationships between documents.
- A new option in the User Profile gives a designated Transmittal Administrator the right to create and modify Transmittal Templates as well as fields in the Transmittal and Job data tables.



When you create a new transmittal, you can select from a list of pre-configured templates.



You can add documents and include children of those documents as part of your attachment.



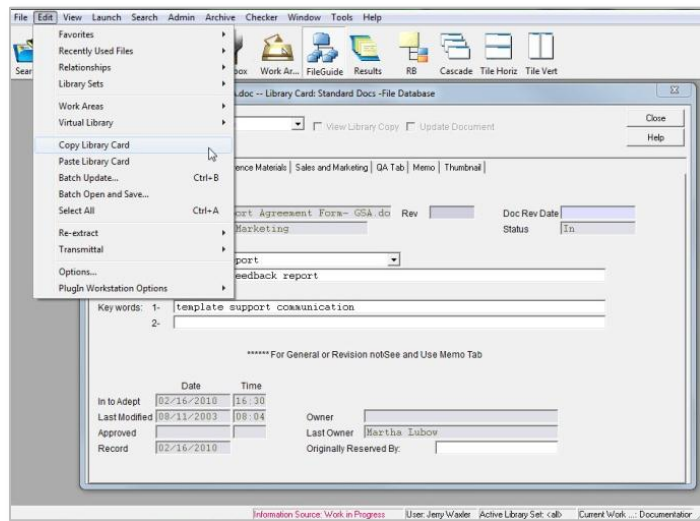
There are several options for sending your transmittal attachments, including transmittal only, an Adept link, all documents or all documents zipped, or as PDFs.

### Improvements in AutoNaming Documents

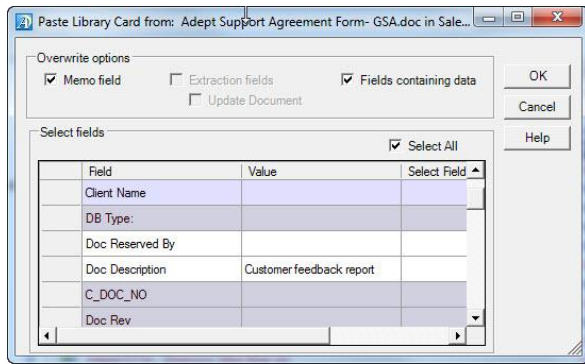
The AutoName feature (formerly AutoNumber) is more tightly integrated in Adept for easier access and usability. AutoName is now accessible in the Create New Files & Records dialog, in the File → New Command. Now, when you create a new file, you have the option of automatically naming it using your predefined naming conventions.

### Copy Library Card

Adept now makes it easy for users to copy information from one Library Card to another or more Library Cards, which saves time and preserves data consistency. When you paste the Library card to one or more destination records, you can select which fields to paste; whether or not to overwrite existing values; or whether or not to include the memo tab. When the ‘Update Document’ option is selected, data in the target files are updated.



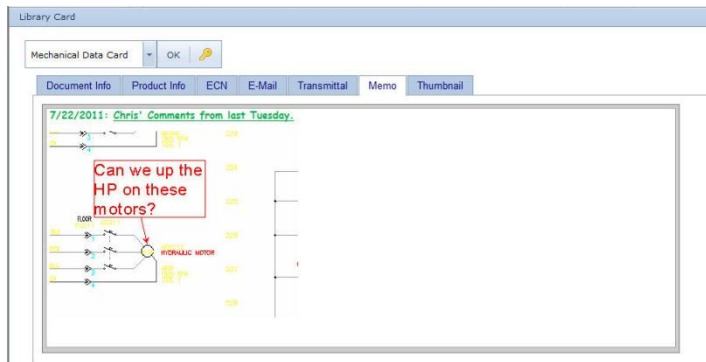
*Adept's new Copy Library Card command.*



*Users have control over which fields in the Library Card are copied.*

## The Memo Tab Supports Rich Text Formatting and Images

You can now paste formatted text and insert images into the Library Card Memo Tab in both Adept Desktop and Adept Reviewer. It also includes standard font controls to add bold, italics, and underlined text. In addition to pasting images, there is an Insert Image button. This allows you to browse for images and insert them into the Library Card memo. Because pasting images into the memo field can increase the size of your database, there is an option in Admin Options for setting a maximum size of an image.



*The Memo tab now supports rich text formatting and images in Adept Desktop and Adept Explorer.*

## SolidWorks 2012 Support

Adept 2011 includes support for SolidWorks 2012, including integration and Task Pane capabilities. The Adept viewer will support SolidWorks 2012 files in the near future. Until that time, you are able to configure a third party viewer to view these files.

## AutoCAD 2012, Inventor 2012, and SolidWorks 2012 Support

Adept 2011 includes full support for AutoCAD 2012, Autodesk Inventor 2012, and SolidWorks 2012, including integration and Task Pane capabilities and integrated visualization with AutoVue 3D Professional.

## Enhanced Data Extraction from Autodesk AutoCAD

- Adept is able to extract, track, and display parent-child relationships for external references contained in AutoCAD blocks.
- Adept can now extract properties and text fields from AutoCAD files

## AutoCAD Electrical Integration

Adept 2011 version 8.4.1 provides integration with Autodesk AutoCAD Electrical 2010, 2011, and 2012. The integration provides the following features:

- Ability to import of existing projects and related drawing files
- Extraction of project files, automatically creating relationships between the project files and drawings
- Copy and rename of projects and related drawing files

Since AutoCAD Electrical files are DWG-based files, all of Adept's features for handling AutoCAD DWG files are available for AutoCAD Electrical files. This includes extraction of attributes, thumbnails, images and external references.

## CAD Performance Improvements

Many speed and functionality improvements have been made to the Adept CAD integrations. The Adept Task Pane includes support for additional "File Open" and "Insert" sub-options and provides increased search results speed by using server-side search mechanisms.

## Virtual Library Improvements

In the Adept Task Pane, the "Skip loading the Virtual Library" option gives the user more control on loading the Virtual Library when opening certain files. More efficient auto-loading of the Virtual Library is now available when using in-context references, substitute level of detail, the quick view option, and SpeedPak configurations.

## Filter Children from Specified Libraries

The Filter Children option provides a major performance improvement for SolidWorks and Inventor users. You can now designate certain Libraries as "filtered", so when a user signs out or sends large assemblies and their referenced files, Adept filters out Toolbox parts or Content Center files. This results in performance increases, because unnecessary parts are no longer being moved from a Library. The feature also increases data integrity, since it eliminates the opportunity to edit standard parts.

## Improvements to Configuration of Third Party Viewers and Applications

There are several new capabilities in Adept that make it easier to configure third party viewers and applications.

## Improved Launch Setup

In previous versions, when you configure Adept to launch a third party viewer or application, you had to type in the location of the executable, for example, "C:\Program Files\Microsoft Office\Office14\Winword.exe." However, the program launch only worked if the application

was installed at the same folder location on every computer. Adept 2011 now supports an alternative that takes advantage of the fact that the Windows Start Menu uses links (LNK) which point to the application. Now instead of pointing to the particular path on your hard drive, the Launch application can use a Windows LNK file. This increases the likelihood that Adept will find the application you are attempting to launch, even if it is installed at a different location on your computer.

### **Improved File Type Feature**

If you have installed a new version of a CAD application that is not yet supported by the Adept Viewer, you are able to set those new files to a different File Type. Adept can launch a third party viewer for files created in the new version of the CAD software, while launching the Adept Viewer to display files created by earlier versions of the CAD software.

#### *Setting Rights*

In previous versions of Adept only Administrators were permitted to set the File Type for a file with the status of IN. In Adept 2011, users with Library Access Rights for editing Library Cards, can change the File Type for a file that is signed in.

#### *Default File Types*

When Adept automatically assigns a File Type to a document in the Work Area or during a Library synchronize, Adept 2011 lets you set a default file type. This is helpful when there is more than one File Type for a given file extension. For example, some files with extension .DWG use Autodesk Mechanical and others use Autodesk Inventor. Or perhaps some files with extension SLDPRT are created in SolidWorks 2011 and others are created in SolidWorks 2012. You can now set which file type Adept should assign by default. In all cases, you can manually change the File Type.

### **Increase Number of Fields and Width of Fields**

Adept Desktop and Adept Explorer now support up to 900 custom fields, and the field length has been increased from 72 to 256 characters, making Adept significantly more scalable for clients who need to track more information about their files.

### **64 Bit Version of Adept Server**

The Adept Server is now available as a 64 Bit application. This will allow users of 64 Bit servers to communicate with the server through a 64 Bit ODBC driver, and will allow the server to take advantage of optimizations of other 64 bit applications.

### **Improved Client/Server Communication Technology**

Adept now leverages a Microsoft Communication Protocol to increase throughput of data between client and server. This infrastructure change will increase the communication speed in environments where there are large numbers of workstations and large numbers of Adept Libraries. It will also reduce any bottleneck in communication between the client and server. Many clients will see faster login times and the ability to have more Adept Libraries.

**Improved Control Over Options When Batch Editing Libraries**

When Administrators change the profile settings of several Libraries at once, they can use the Batch Editing Function. This has existed in previous versions of Adept. Now, in Adept 2011, the user interface has been enhanced to show more clearly exactly what changes you are making across the selected Library Profiles.

**Support for Microsoft SQL Express**

Adept supports Microsoft's free SQL Express database. Before using Microsoft SQL Express, consider these limitations of the implementation:

<b>Capacity Limitations</b>	<b>Enterprise</b>	<b>Express</b>
Number of CPUs	8	1
Maximum memory utilized	2 TB	1 GB
Maximum database size	524 PB	10 GB