



---

## Adept Explorer Overview

---

Synergis Software  
200 Kelly Road, Quakertown, PA 18951  
+1 215.529.9900, 800.836.5440  
[www.SynergisSoftware.com](http://www.SynergisSoftware.com)

## Adept Explorer Overview

Adept Explorer is a thin, web-based client designed for those users who need to review or consume documents and information stored in Adept. It complements Adept's full-featured Desktop client, offering a simplified interface and allowing users to find, view, print, redline, assign and copy documents based on their permissions in Adept. Explorer provides the same powerful viewing capabilities found in the Desktop client for AutoCAD, Inventor, SolidWorks, Word, Excel, PDF, TIF, and hundreds of other formats. Explorer displays revision information, file relationships, workflow status, and the audit trail of a document throughout its lifecycle.

## Who Needs Adept Explorer

Adept Explorer is designed for anyone who needs to view or copy access to documents stored in Adept. Groups of users who may benefit from Adept Explorer include manufacturing, procurement, maintenance, customer service, sales, marketing, quality assurance, project management, accounting, executives, contractors, customers and vendors.

## Adept Explorer Capabilities and Benefits

**Browser-based document access** – Adept Explorer runs from within Internet Explorer, so users are quickly comfortable with the navigation, and there is no client side installation or updates.

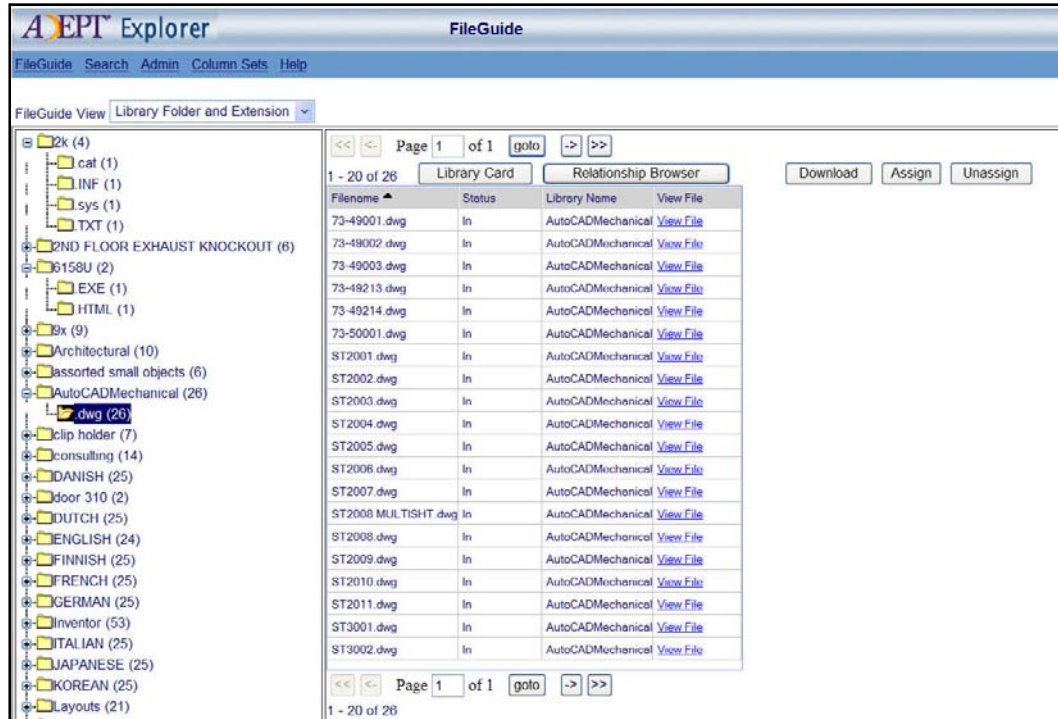
**Find files fast** – Adept Explorer ensures users across the enterprise have access to the documents and information they need fast. Using the Search Card, users can do simple or complex searches based on any information they know about the files they are looking for.

The screenshot shows the Adept Explorer Search Card interface. At the top, there is a header with the logo 'ADEPT Explorer' and the title 'Search Card'. Below the header is a navigation menu with links for 'FileGuide', 'Search', 'Admin', 'Column Sets', and 'Help'. The main content area features a search form with the following elements:

- A 'Library Card' tab and a 'Complete Data' dropdown menu.
- 'Search' and 'Clear' buttons, along with a 'Search Key' input field.
- A secondary menu with tabs for 'Synergis', 'Gen Docs', 'Engineering', 'Inventor Properties', 'SolidWorks Properties', and 'Memo'.
- Search fields for 'Filename' (containing 'acad'), 'Library', 'Status', 'Drawing Number', 'Revision', 'Title', 'Designer', 'Size', 'Scale', 'Sheet', 'Client', 'Address', and 'Document Type'.
- A 'Comment 1' field at the bottom left.

*Adept Explorer's Search Card*

Using the FileGuide, users can browse through their documents based on any combination of fields in the Adept database.

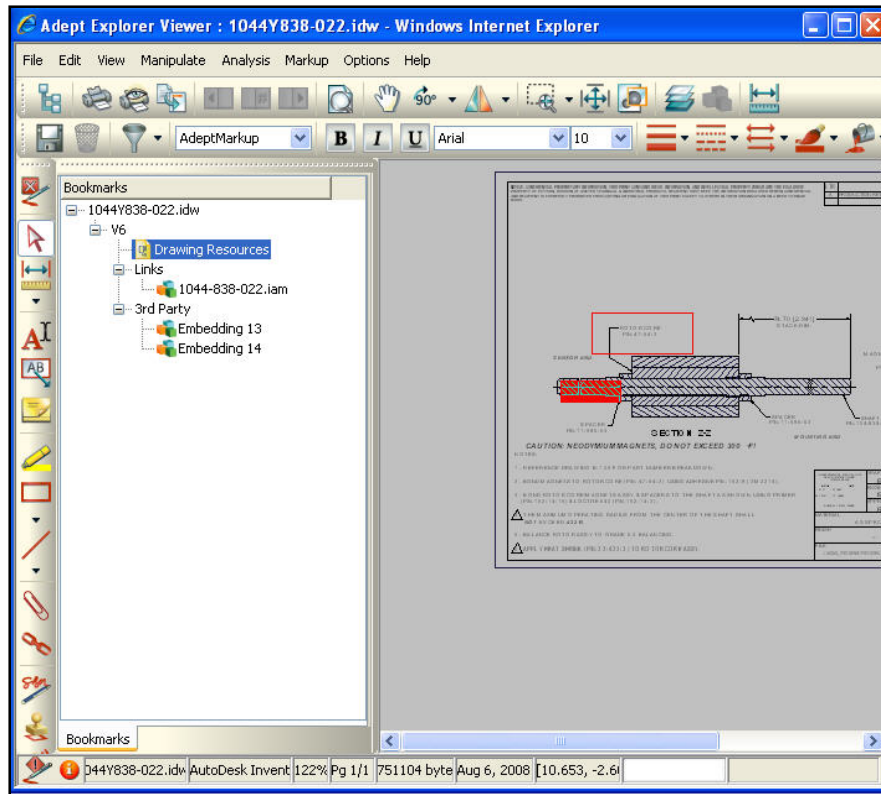


*Adept Explorer's FileGuide*

### **View, Print and Redline Documents with Adept's Built in Visualization**

Adept Explorer includes the full featured web-based Visualization component from Oracle®, which displays over 300 native file formats, including AutoCAD®, Autodesk Inventor®, SolidWorks®, Microsoft® Word and Excel, PDF, and TIF.

Using the built-in viewer, non-CAD users can display, redline or print engineering and technical documents without need for expensive seats of CAD software, enabling collaboration and enhanced productivity across the enterprise.

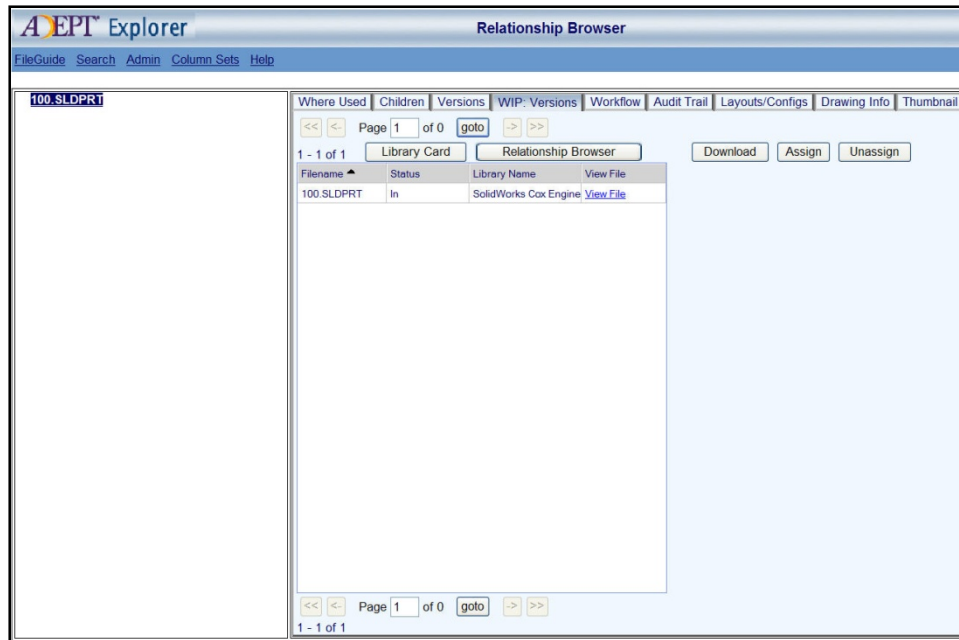


*Adept Explorer's Viewer with Redlines*

**Assign documents to other users** – Adept Explorer allows users to assign documents to other users to initiate work or request a review, uniting users and teams through a central database.

**Copy files** – Users with appropriate permissions may download a copy of a file from within Adept Explorer.

**File Relationships** – Adept manages the complex parent-child relationships of AutoCAD XREFs, Inventor and SolidWorks parts, assemblies, and drawings, and supports the creation of file relationships between documents of any type. Adept Explorer users can view these relationships, including where used and composed of information, and SolidWorks configuration information, offering a more complete view of a project or product structure.



*Adept Explorer's Relationship Browser WIP: Versions View*

**Revision Information** – Adept ensures proper revision control for all files it manages, and can automatically save previous revisions as required. Adept Explorer enables users to view this revision information at a glance.

**Workflow Status** – Adept offers the ability to create pre-defined document workflows, ensuring the appropriate approval cycle has been completed prior to release to other departments, contractors or customers. Adept Explorer allows users to view workflow status, including steps completed and remaining, facilitating a clear view of project or product status.

**Audit Trail** – Adept Explorer users have access to Adept's Audit Trail which maintains a record of the activity on each document throughout its lifecycle. The audit trail helps organizations comply with industry standards, navigate legal issues, and visualize inefficiencies in their existing processes and workflow.

\*Adept Explorer does not require an installation on the client workstation, however the workstation must have Internet Explorer v6.0 SP2 or greater; including the latest hot fixes and service packs, Windows 2000, XP, or XP Pro, Vista or Windows 7 (32-bit or 64-bit) all with latest service packs, and Sun Java Virtual Machine Runtime Environment v1.4.2 or greater.

**Concurrent Licenses** – Just like our full-featured Adept Desktop client, Adept Explorer licenses are concurrent, so a large number of users can share a smaller number of Adept Explorer licenses.