



Adept Explorer 2011 Overview

Synergis Software
200 Kelly Road, Quakertown, PA 18951
+1 215.529.9900, 800.836.5440
www.SynergisSoftware.com

Adept Explorer Overview

Adept Explorer is a thin, web-based client designed for those users who need to review or consume documents and information stored in Adept. It complements Adept's full-featured Desktop client, offering a simplified interface and allowing users to find, view, print, redline, assign and copy documents based on their permissions in Adept. Explorer provides the same powerful viewing capabilities found in the Desktop client for AutoCAD, Inventor, SolidWorks, Word, Excel, PDF, TIF, and hundreds of other formats. It also displays revision information, file relationships, workflow status, and the audit trail of a document throughout its lifecycle.

Who Needs Adept Explorer?

Adept Explorer is designed for anyone who needs to view or copy documents stored in Adept. Groups of users who may benefit from Adept Explorer include: manufacturing, procurement, maintenance, customer service, sales, marketing, quality assurance, project management, accounting, executives, contractors, customers and vendors.

Adept Explorer Capabilities

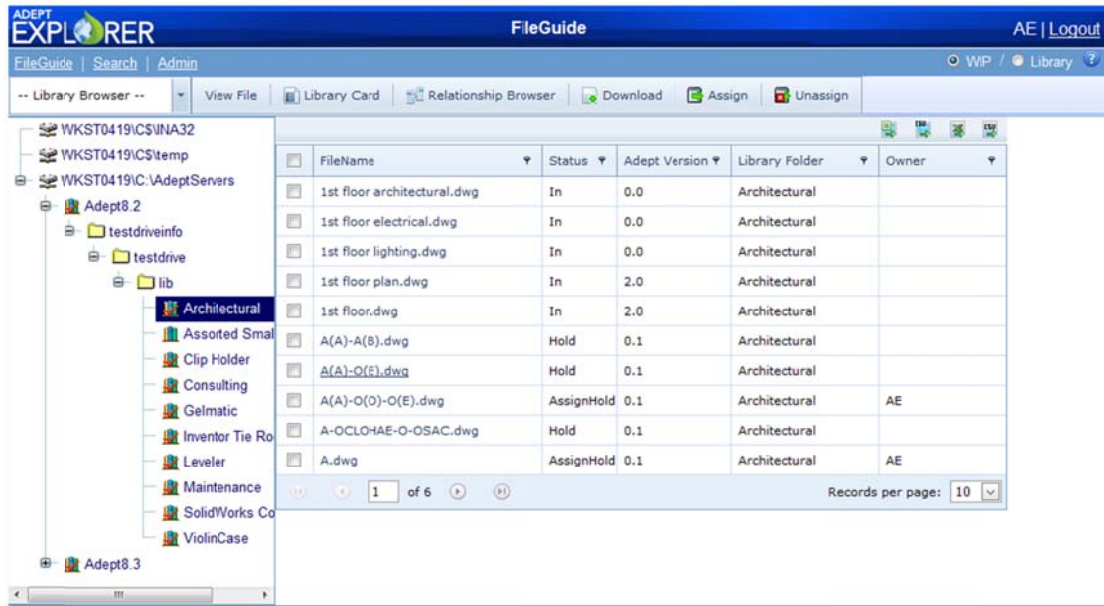
Browser-based document access – Adept Explorer runs from within your Internet Explorer or Firefox browser, making it easy to navigate and learn. When you install Explorer, there is no need to install or update the client software.

Find files fast – Adept Explorer ensures that users across the enterprise have fast access to the documents and information they need. Using the Search Card, you can perform simple or complex searches. For example, you can search on one, several or all fields.

The screenshot shows the Adept Explorer Search Card interface. It features a blue header with the 'ADEPT EXPLORER' logo and 'Search Card' title. Below the header is a navigation bar with 'FileGuide | Search | Admin' and 'WIP / Library' tabs. The main search area has a dropdown menu set to 'Project Development 6x4', a search input field, a 'Clear' button, and a 'Search All Fields' button. Below this are several tabs: 'Project Development', 'Approval Info', 'Drawing Attributes', and 'Memo'. The search form contains various input fields: 'Filename' (with an asterisk), 'Library', 'Owner', 'Last Owner', 'Clients Name' (with a 'Name' sub-field), 'Document Type', 'Designer', 'Project Type', 'Project Engineer', 'File Date', and 'Status'. The footer contains copyright information: '© Copyright 2006-2011 Synergis Technologies, Inc. All rights reserved. Version 6.4.0.917' and the Synergis Software logo.

A sample of an Adept Explorer Search Card

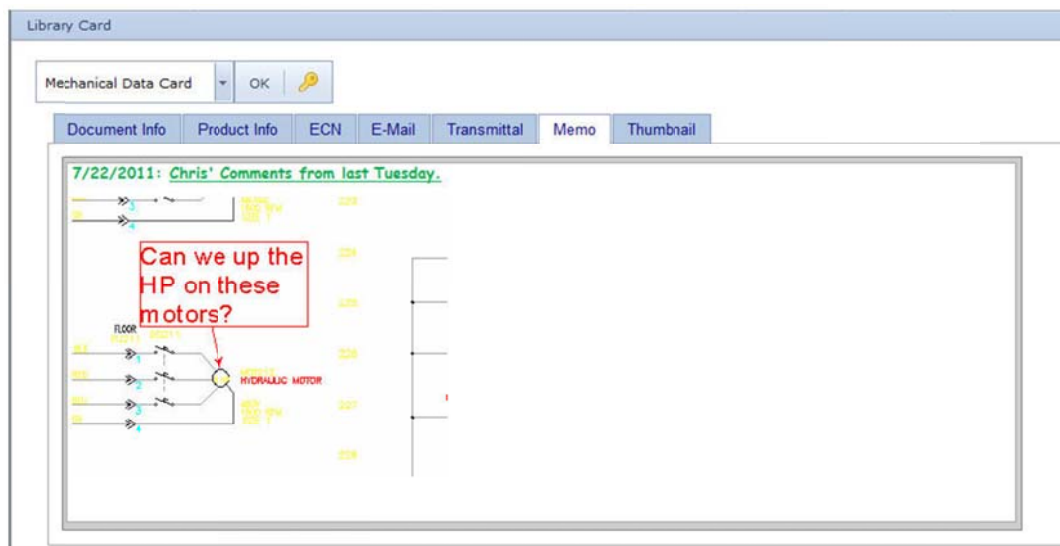
Using the FileGuide, you can browse through your documents based on any combination of fields in the Adept database.



Adept Explorer's FileGuide

To view all the fields in the Search card, you can select the Library Card button. In Adept Explorer, this metadata is visible as read-only information.

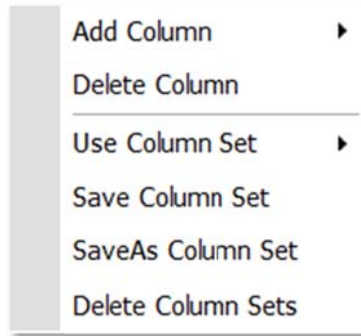
The Memo Tab supports Rich Text Format and images - Across the top of the Library Card are tabs that display various sets of information. The memo tab displays the memo field for that file. The memo tab can contain formatted text and images as shown below.



The Memo tab in Adept Explorer supports rich text formatting and images.

Add and manage column sets from the right-click menu

You can add or delete columns in Adept Explorer by right-clicking any column header and selecting from the right-click menu. You can also save your column sets. To change the order of columns, you simply drag and drop the column header.



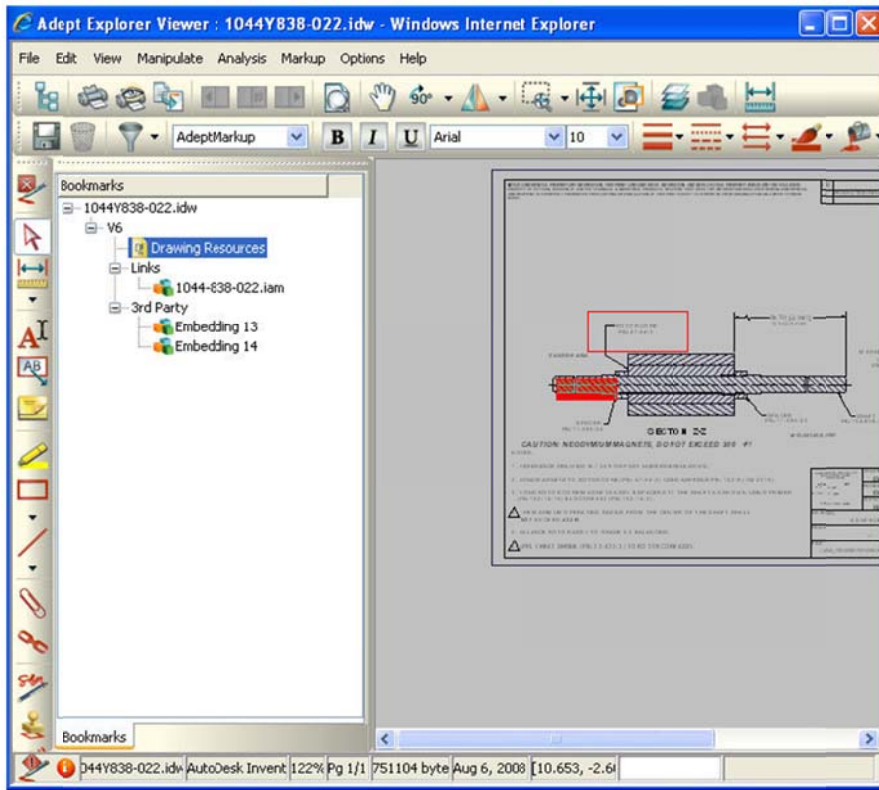
A right-click menu gives greater control over column sets.

URL feature lets you share a file - In Adept Explorer, you can obtain a URL for a file, and then send that URL to Adept Explorer users or an integrated program, which allows the file to be opened in another Adept Explorer browser.

Email notifications include Adept Explorer link - It is now possible for Adept email notifications to include a URL link that will take you directly to your Adept Explorer Inbox, where you can access the file. This feature makes it easier for Adept Explorer users to participate in workflows.

View, Print and Redline Documents - Adept Explorer includes the full featured web-based Visualization component from Oracle, which displays over 300 native file formats, including AutoCAD, Autodesk Inventor, SolidWorks, Microsoft Word and Excel, PDF, and TIF.

Using the built-in viewer, non-CAD users can display, redline or print engineering and technical documents without need for expensive seats of CAD software, enabling collaboration and enhanced productivity across the enterprise.

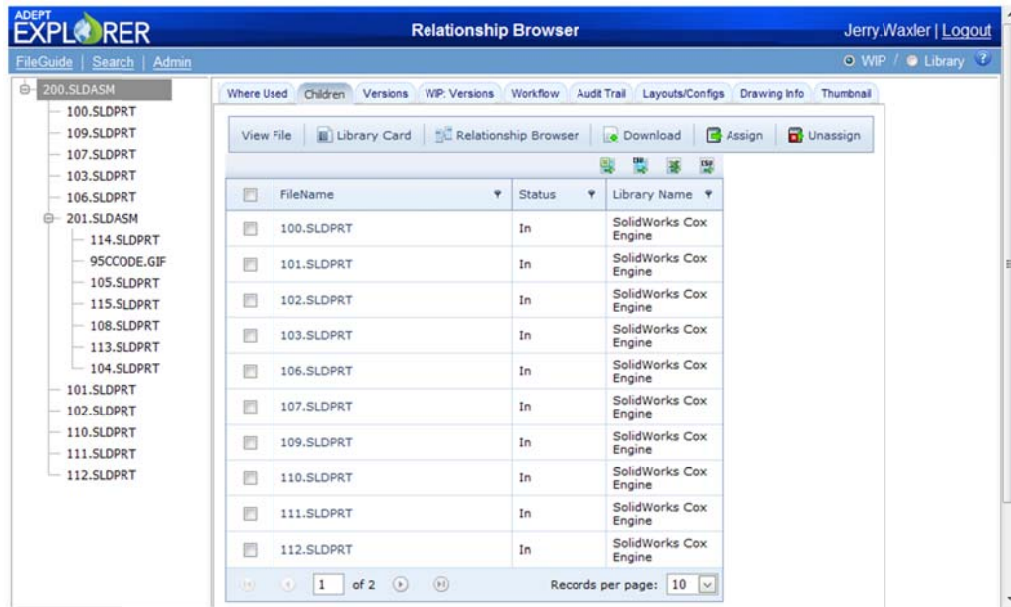


Adept Explorer's Viewer displays redline mark ups.

Assign documents to other users – Adept Explorer allows users to assign documents to other users to initiate work or request a review, uniting users and teams through a central database.

Copy files – Users with appropriate permissions may download a copy of a file from within Adept Explorer.

File relationships – Adept manages the complex parent-child relationships of AutoCAD XREFs, Inventor and SolidWorks parts, assemblies, and drawings, and supports the creation of file relationships between documents of any type. Adept Explorer users can view these relationships, including information about where the part is used, and in the case of SolidWorks files, which configuration is used, offering a more complete view of a project or product structure.



Adept Explorer's Relationship Browser WIP: Versions View

Revision information – Adept ensures proper revision control for all files it manages, and can automatically save previous revisions as required. Adept Explorer enables users to view this revision information at a glance.

Workflow status – Adept offers the ability to create pre-defined document workflows, ensuring the appropriate approval cycle has been completed prior to release to other departments, contractors or customers. Adept Explorer allows users to view workflow status, including steps completed and remaining, facilitating a clear view of project or product status.

Audit trail – Adept Explorer users have access to Adept's Audit Trail, which maintains a record of the activity on each document throughout its lifecycle. The audit trail helps organizations comply with industry standards, navigate legal issues, and visualize inefficiencies in their existing processes and workflow.

No workstation installation – Adept Explorer does not require an installation on the client workstation. For details on workstation system requirements, see the Adept Explorer 2011 System Requirements at www.SynergisSoftware.com.